

VIVID 4

Cardiovascular Ultrasound System







Moving 4 Ward

Over 3,000 customers, over three years. Plus GE's commitment to annual breakthroughs that draw on customer feedback. This was the starting point in designing the newest member of the VIVID family of ultrasound systems.

By incorporating the popular features of the VIVID 3, one of the first PC-based systems, with technological breakthroughs from GE's leadership systems, GE Medical Systems has engineered an easy-to-use, high-performance ultrasound system that brings superb diagnostic power to your clinical practice.

Introducing the all-new VIVID 4 system, a comprehensive ergonomically-designed system that builds on the success of other GE systems – and helps you move 4 ward.

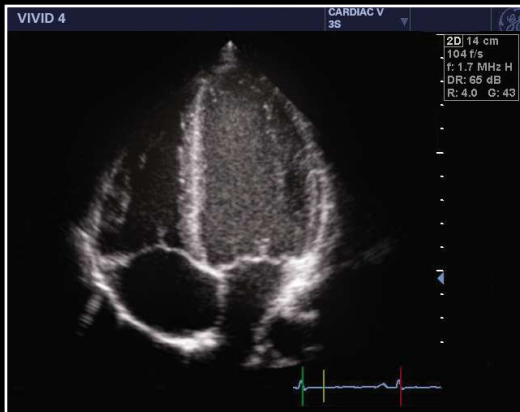
Innovations 4 your clinical practice.

In designing the VIVID 4, GE paid heed to features praised by VIVID 3 customers, like its compact shape, workflow efficiencies and ease of use, and combined them with new features like:

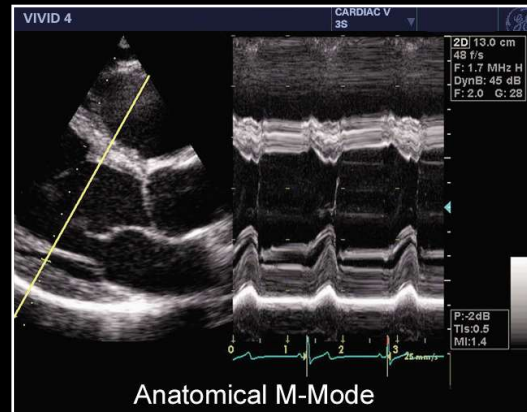
- Tissue Tracking
- SmartStress (optional)
- Comfortable 4-way swivel keyboard
- High frame rates for 2D and color imaging
- High-contrast 17-inch display
- MPEGvue for easy transfer and remote viewing of full patient records compactly saved onto CDs
- Up to 18 transducers for the broadest array of applications

In effect, GE has raised the bar for clinical excellence with a value-based combination of proven technology and cutting-edge innovations.

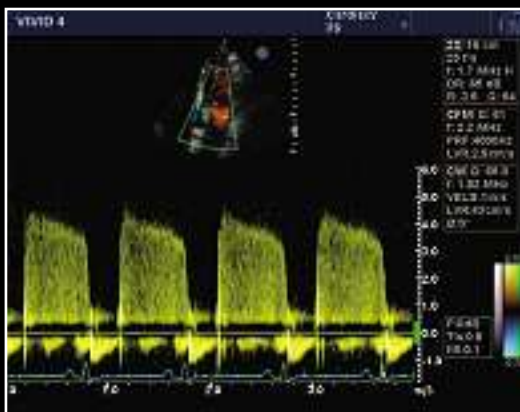
Cardiac



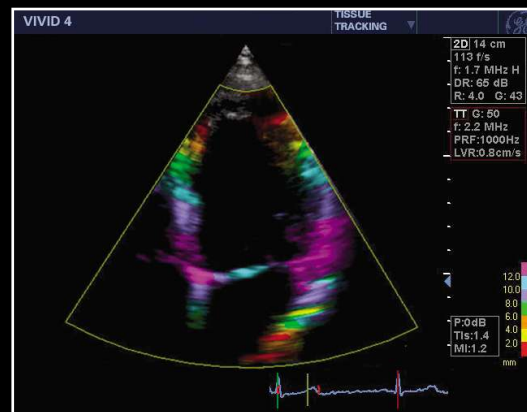
Apical four chamber view



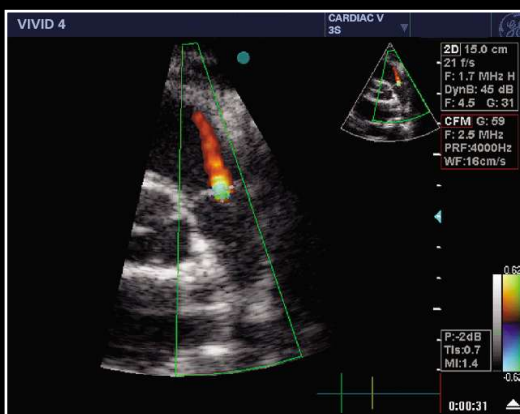
Anatomical M-Mode of left ventricle



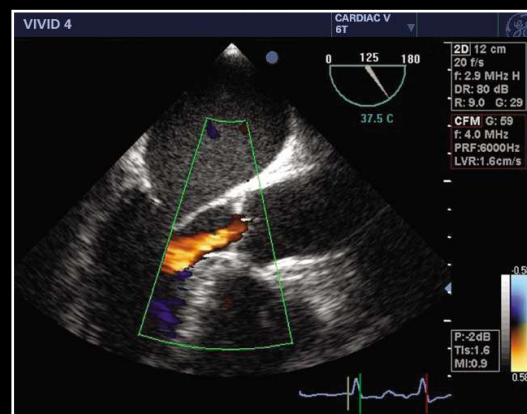
Aortic insufficiency



Tissue Tracking

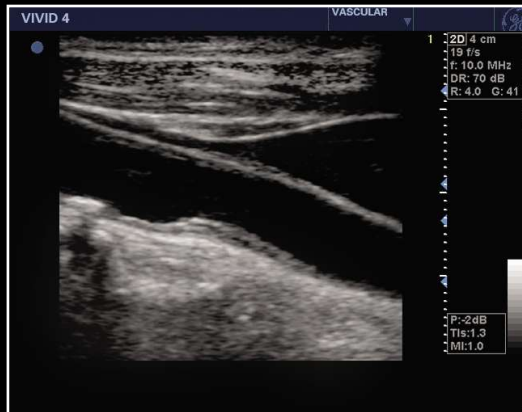


Pulmonary insufficiency

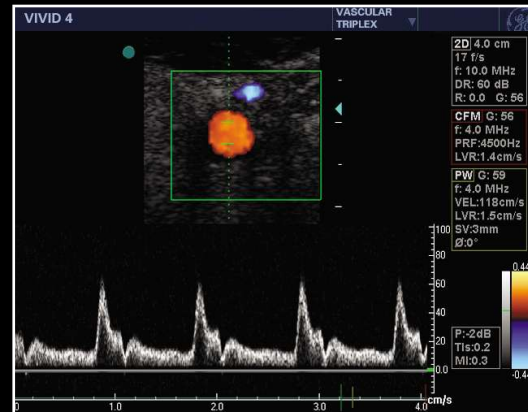


Transesophageal demonstrating aortic insufficiency

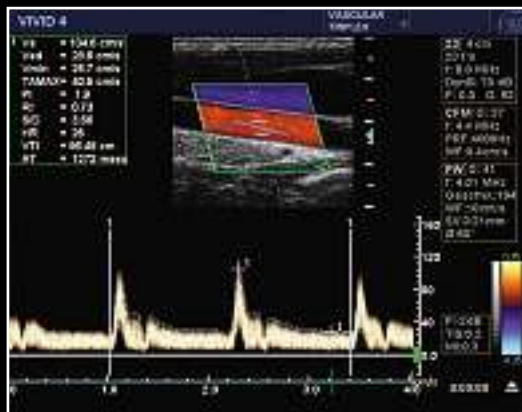
Shared Service



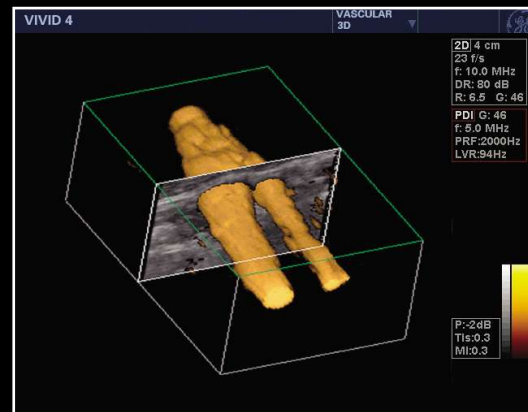
*Carotid Artery with Plaque
Automatic Tissue Optimization*



*Carotid Artery with Color Doppler
Triplex Mode*



Smart Doppler – Auto Calculation



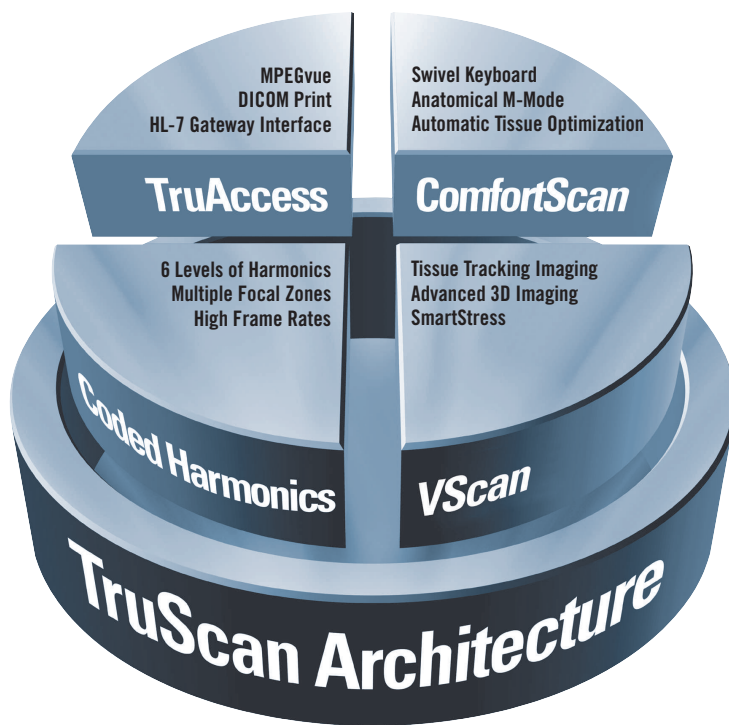
Advanced Vascular 3D



Liver with Kidney



Kidney Perfusion with Color Angio



At the core of the Vivid family of cardiovascular ultrasound systems is TruScan, GE's revolutionary imaging platform.

With TruScan, the ultrasound data is digitally acquired and stored in its raw state to preserve the integrity of the data. The resulting pristine images can then be viewed, measured, optimized and analyzed at any time, without losing any of the original integrity and image quality.

Truly exceptional performance with TruScan.

VScan for Complete Versatility

Scan a wide range of patients using a multitude of transducers that give you full shared-service capabilities and breakthrough cardiac performance with leading-edge features, such as:

- Tissue Tracking Imaging aids in the detection of coronary heart disease by providing better visualization and quantification of regional wall motion.
- Enhanced OR performance with TEE and intraoperative probes, and critical time-saving features, such as easy system transport, immediate CD storage of studies for consultation, Plug & Scan for fast system reboot, FlexiView for serial multiple image comparisons, and new MPEGvue.
- SmartStress helps shorten stress echo optimization times by saving imaging settings at each level and view.
- Advanced 3D option for vascular studies.

TruAccess Data Management

Increase patient throughput with instant access to patient archiving for complete information management. Full raw data DICOM connectivity permits post-exam analysis and streamlines report generation and networking.

- New MPEGvue option lets you compactly save entire patient records – including high-quality images – onto CDs that can be transferred easily and inexpensively for remote viewing on your PC via e-mail or network communication.
- Design custom report templates by selecting the format and appearance you need – even import your facility's logo.
- Comprehensive connectivity and networking options with direct DICOM printing through raw data DICOM or an EchoPAC Network, plus new HL-7 Gateway interfacing.

Coded Harmonics Image Quality

The Vivid 4 generates exceptional images with ultrawide bandwidths and Coded Harmonics that ensure definition of the LV endocardial border while retaining crisp valve structure.

- Cardiac imaging with 6 levels of Harmonics.
- High frame rate 2D Harmonics.
- Multiple focal control.
- Color Doppler imaging with innovative processing algorithms.

ComfortScan Working Advantage

Helping you to work faster and more comfortably is the catalyst for designing unique features that make a big difference in your day-to-day clinical practice.

- Ergonomically-designed, 4-way swivel keyboard lets you smoothly adjust the console in whichever direction is most comfortable for you.
- Automatic Tissue Optimization (ATO) helps you obtain quality images faster by adjusting the image settings automatically, at the touch of a button.
- Anatomical M-Mode option lets you correct for off-axis orientation when the heart is not shaped or positioned normally.
- Plug & Scan expedites exams by reducing boot-up times.
- Triplex Mode simplifies Doppler acquisitions during cardiovascular exams.



- TruScan Architecture
- SmartStress
- Tissue Tracking
- MPEGvue
- 6 Levels of Harmonics
- Plug & Scan
- Swivel Keyboard
- High Frame Rates
- 18 Probes
- Annual Breakthroughs
- Anatomical M-Mode
- Vascular 3D
- FlexiView
- Intraoperative Probes
- Triplex
- DICOM Connectivity
- EchoPAC Share
- ATO

Autorizovaný obchodní a servisní partner:



COMPEK MEDICAL SERVICES, s.r.o.
17. listopadu 861, 506 01 Jičín
mobil: + 420 605 281 433
tel./fax: + 420 493 524 534
e-mail: info@compek.cz
internet: www.compek.cz

COMPEK MEDICAL SERVICES, s.r.o.
Strážna 11, 831 01 Bratislava
mobil: + 421 908 758 793
fax: + 421 2 3301 6145
e-mail: info@compek.sk
internet: www.compek.sk

General Electric Company reserves the right to make changes in specifications and features shown herein, or discontinue the product described at any time without notice or obligation. Contact your GE Representative for the most current information.

© Copyright 2003 General Electric Company

Printed in Austria 299-04-U002E

For more than 100 years, healthcare providers worldwide have relied on GE Medical Systems for medical technology, services, and productivity solutions.

So no matter what challenges your healthcare systems faces - you can always count on GE to help you deliver highest quality healthcare.

For details, please contact your GE representative today.



GE Medical Systems **Ultrasound**

GE Ultraschall Deutschland GmbH & Co. KG:
Beethovenstr. 239, D-42655 Solingen
Fax: (+49) 212 28 02-28, Tel: (+49) 212 28 02-0

GE Medical Systems Ultrasound - United Kingdom:
Fax: (+44) 1234 266 261, Tel: (+44) 1234 340 881

GE Medical Systems - America:
Milwaukee, WI, USA - Fax: (+1) 262 544 33 84

GE Medical Systems - Asia:
Tokyo, Japan - Fax: (+81) 3-3223-852 4
Shanghai, China - Fax: (+86) 21-5208 0582

Internet: www.gemedical.com